

Mouse Monoclonal anti-human ErbB2

ORDERING INFORMATION

Catalog No:	hAP-0042
Size:	100 µg
Storage:	< -20° C
Immunogen:	human recombinant ErbB2 protein
Ig Type:	mouse IgG2
Clone:	MM0042-1K11
Applications:	Western blot and Immunohistochemistry

Preparation: This antibody was produced from a hybridoma (mouse myeloma fused with spleen cells from a mouse immunized with recombinant human ErbB2).

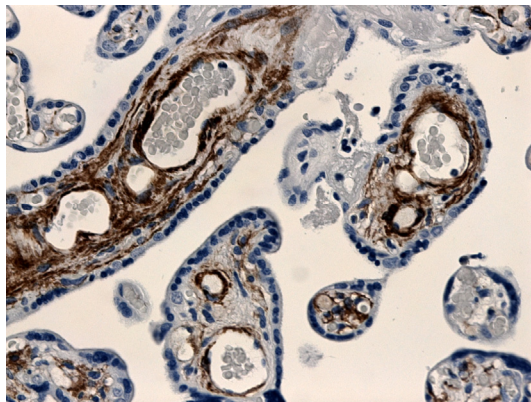
Formulation and Storage: The IgG fraction of culture supernatant was purified by Protein G affinity chromatography and lyophilized from a 0.2 µm filtered solution in phosphate-buffered saline (PBS). Lyophilized samples are stable for 2 years from date of receipt when stored at -70°C.

Reconstitution: Reconstitute the antibody with 500 µl sterile PBS and the final concentration is 200µg/ml. Reconstituted antibody can also be aliquoted and stored frozen at < -20 for at least for six months without detectable loss of activity. **Avoid repeated freeze-thaw cycles.**

Specificity: This antibody recognizes human ErbB2 in western blot. No cross-reactivity to human other ErbB proteins.

Applications:

- | | | |
|--|------------|---------------------|
| 1. Western blotting: | Yes | (1:100-1000) |
| 2. Immunohistochemistry (Paraffin): | Yes | (1:50-200) |



Formalin fixed and paraffin embedded human placental tissue section is subjected to IHC with hAP-0042.

Final dilutions should be optimized by the end users and the dilutions provided in the data sheet are for reference only.

Contact & Ordering Information: Angio-Proteomie, 11 Park Drive, Suite 12, Boston, MA 02215, USA. Tel: 001-6175492665; Fax: 001-4802474337, angioproteomie@gmail.com