

Mouse Monoclonal anti-human EG-VEGF

ORDERING INFORMATION

| | |
|----------------------|--|
| Catalog No: | hAP-0046 |
| Size: | 100 µg |
| Storage: | < -20° C |
| Immunogen: | human recombinant EG-VEGF protein |
| Ig Type: | mouse IgG2 |
| Clone: | MM0046-2L13 |
| Applications: | Western blot, ELISA and IHC |

Preparation: This antibody was produced from a hybridoma (mouse myeloma fused with spleen cells from a mouse immunized with recombinant human Endocrine Gland-derived Vascular Endothelial cell Growth Factor (EG-VEGF)).

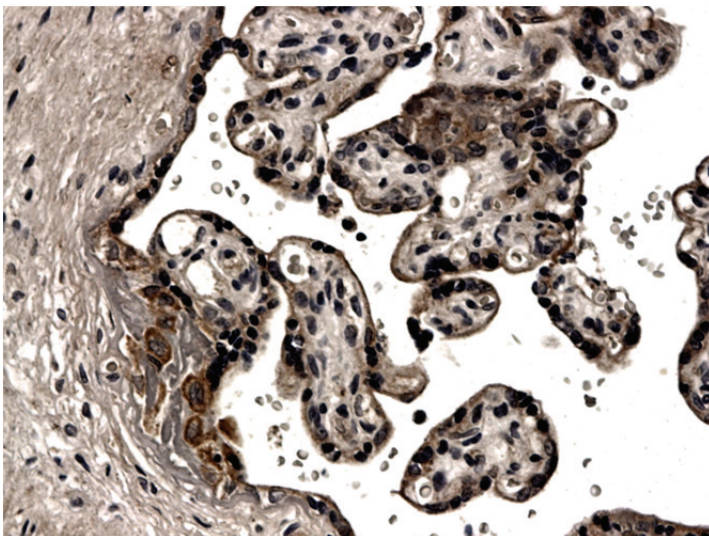
Formulation and Storage: The IgG fraction of culture supernatant was purified by Protein G affinity chromatography and lyophilized from a 0.2 µm filtered solution in phosphate-buffered saline (PBS). Lyophilized samples are stable for 2 years from date of receipt when stored at -70°C.

Reconstitution: Reconstitute the antibody with 500 µl sterile PBS and the final concentration is 200µg/ml. Reconstituted antibody can also be aliquoted and stored frozen at < -20 for at least for six months without detectable loss of activity. **Avoid repeated freeze-thaw cycles.**

Specificity: This antibody recognizes human EG-VEGF in western blot. It is highly cross reactive rat and mouse EG-VEGF proteins.

Applications:

| | | |
|-----------------------------------|------------|----------------------|
| 1. Western blotting: | Yes | (1:100-1000) |
| 2. ELISA: | Yes | (1:2000-8000) |
| 3. IHC (Formalin/Paraffin) | Yes | (1:50-100) |



Formalin fixed and paraffin embedded normal human placenta tissue is subjected to mouse anti human EG-VEGF (hAP-0046)

Final dilutions should be optimized by the end users and the dilutions provided in the data sheet are for reference only

Contact & Ordering Information: Angio-Proteomie, 11 Park Drive, Suite 12, Boston, MA 02215, USA. Tel: 001-6175492665; Fax: 001-4802474337, angioproteomie@gmail.com