

Rat anti mouse Pan-Endothelial Cell Marker

ORDERING INFORMATION

Catalog Number:	mAP-0061
Size:	100 µg
Storage:	< -20° C
Immunogen:	Cell lysates of mouse endothelial cells
Ig Type:	Rat IgG2
Clone	RM0061-4J13
Applications:	Flow Cytometry, IP and IHC

Preparation: This antibody was produced from a hybridoma (mouse myeloma fused with spleen cells from a rat immunized with cell lysates of mouse Endothelial cells).

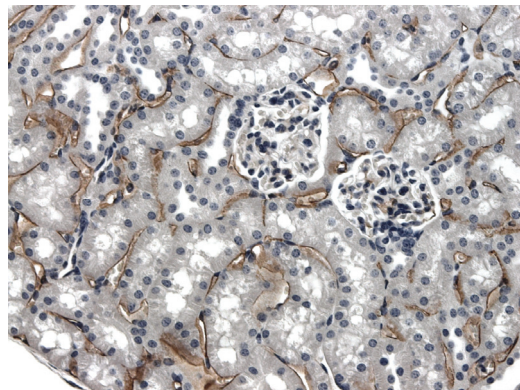
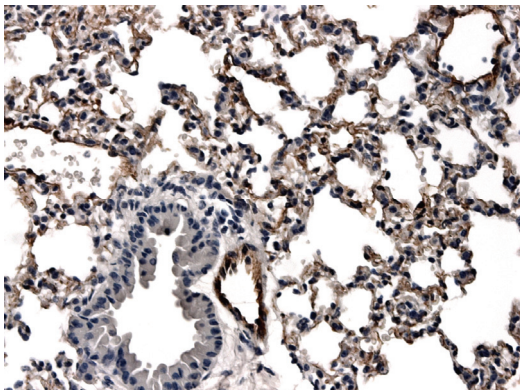
Formulation and Storage: The IgG fraction of culture supernatant was purified by Protein A/G affinity chromatography and lyophilized from a 0.2 µm filtered solution in phosphate-buffered saline (PBS). Lyophilized samples are stable for 2 years from date of receipt when stored at -70°C.

Reconstitution: Reconstitute the antibody with 200 µl sterile PBS (final concentration 500µg/ml). Reconstituted antibody can be aliquoted and stored frozen at < -20 for at least for six months without detectable loss of activity. **Avoid repeated freeze-thaw cycles.**

Specificity: This antibody was selected for its ability to detect mouse endothelial cells by IHC.

Application(s)

1. Flow Cytometry	Yes	(1:50-200)
2. IP	Yes	(1:100-400)
3. IHC (Paraffin)	Yes	(1:100-200)



4% PFA fixed and paraffin embedded mouse Liver and Lung sections from LPS treated mice was subjected to immunohistochemistry staining (DAB) of Pan-EC-Marker using mAP-0061.

The listed dilutions are for recommendation only and the final conditions should be optimized by the ender users!

Contact & Ordering Information: Angio-Proteomie, 11 Park Drive, Suite 12, Boston, MA 02215, USA. Tel: 617-549-2665; Fax: (480) 247-4337, angioproteomie@gmail.com