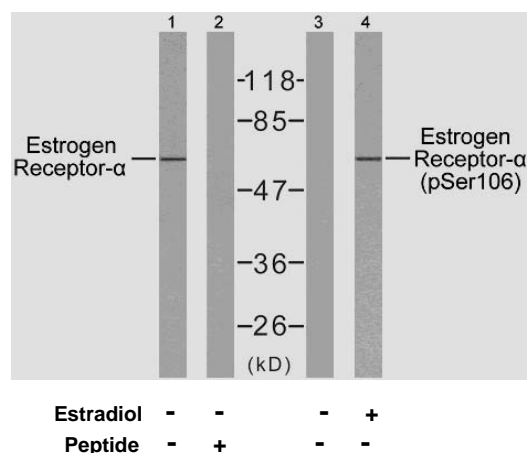




11 Park Drive, Suite 12
Boston, MA 02215

Rabbit anti Estrogen Receptor- α (pSer106)

- Catalog Number:** pAP11071
Amount: 100 μ l (for 10 Western Blotting)
Form of Antibody: Rabbit IgG in phosphate buffered saline (without Mg²⁺ and Ca²⁺), pH 7.4, 150mM NaCl, 0.02% sodium azide and 50% glycerol.
Storage/Stability: Store at -20°C/1 year
Immunogen: The antiserum was produced against synthesized phosphopeptide derived from human Estrogen Receptor- α around the phosphorylation site of serine106 (S-P- S^P-P-L).
Purification: The antibody was affinity-purified from rabbit antiserum by affinity-chromatography using epitope-specific phosphopeptide. The antibody against non-phosphopeptide was removed by chromatography using non-phosphopeptide corresponding to the phosphorylation site.
Specificity/Sensitivity: Estrogen Receptor- α (phospho-Ser106) antibody detects endogenous levels of Estrogen Receptor- α only when phosphorylated at serine 106.
Reactivity: Human, Mouse
Applications: WB: 1:1000
Swiss-Prot No. : P03372
References: Medunjanin S, et al. (2005). J Biol Chem.80 (38):33006-33014.
Duterte M, et al. (2003). Mol Endocrinol.17 (7): 1296-1314.
Chen D, et al. (2000). Mol Cell.6 (1): 127-137.



Western blot analysis of extracts from MCF7 cells, using Estrogen Receptor- α (Ab-106) antibody (AP21066) and Estrogen Receptor- α (phospho-Ser106) antibody (pAP11071)

For Research Use Only

Contact & Ordering Information: Angio-Proteomie, 11 Park Drive, Suite 12, Boston, MA 02215, USA. Fax: (480) 247-4337, angioproteomie@gmail.com