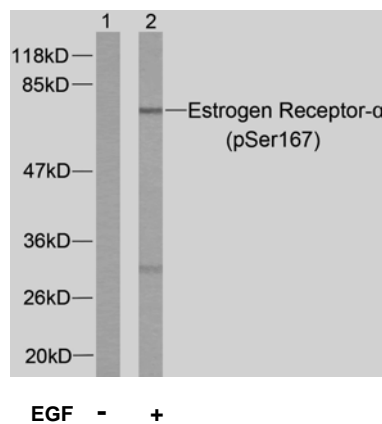


## Rabbit anti Estrogen Receptor- $\alpha$ (pSer167)

- Catalog Number:** pAP11073  
**Amount:** 100 $\mu$ l (for 10 Western Blotting)  
**Form of Antibody:** Rabbit IgG in phosphate buffered saline (without Mg<sup>2+</sup> and Ca<sup>2+</sup>), pH 7.4, 150mM NaCl, 0.02% sodium azide and 50% glycerol.  
**Storage/Stability:** Store at -20°C/1 year  
**Immunogen:** The antiserum was produced against synthesized phosphopeptide derived from human Estrogen Receptor- $\alpha$  around the phosphorylation site of serine 167 (L-A-S<sup>P</sup>-T-N).  
**Purification:** The antibody was affinity-purified from rabbit antiserum by affinity-chromatography using epitope-specific phosphopeptide. The antibody against non-phosphopeptide was removed by chromatography using non-phosphopeptide corresponding to the phosphorylation site.  
**Specificity/Sensitivity:** Estrogen Receptor- $\alpha$  (phospho-Ser167) antibody detects endogenous levels of Estrogen Receptor- $\alpha$  only when phosphorylated at serine167.  
**Reactivity:** Human  
**Applications:** WB: 1:1000  
**Swiss-Prot No. :** P03372  
**References:** Shah YM, et al. (2005). Mol Endocrinol.19 (3): 732-748.  
Sun M, et al. (2001). Cancer Res.61 (16): 5985-5991.  
Campbell RA, et al. (2001). J Biol Chem.276 (13): 9817-9824.  
Chen D, et al. (2000). Mol Cell.6 1): 127-137.



Western blot analysis of extracts from MCF7 cells using Estrogen Receptor- $\alpha$  (phospho-Ser167) antibody (pAP11073).

**For Research Use Only**

Contact & Ordering Information: Angio-Proteomie, 11 Park Drive, Suite 12, Boston, MA 02215, USA. Fax: (480) 247-4337, [angioproteomie@gmail.com](mailto:angioproteomie@gmail.com)