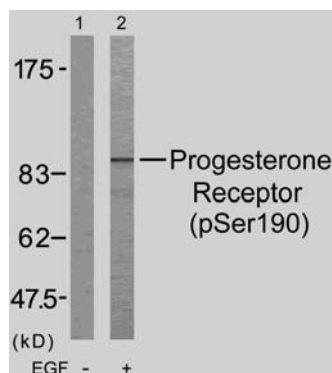


Rabbit anti Progesterone Receptor (pSer190)

- Catalog Number:** pAP11074
Amount: 100µl (for 10 Western Blotting)
Form of Antibody: Rabbit IgG in phosphate buffered saline (without Mg²⁺ and Ca²⁺), pH 7.4, 150mM NaCl, 0.02% sodium azide and 50% glycerol.
Storage/Stability: Store at -20°C/1 year
Immunogen: The antiserum was produced against synthesized phosphopeptide derived from human Progesterone Receptor around the phosphorylation site of serine 190 (G-L-S^P-P-A).
Purification: The antibody was affinity-purified from rabbit antiserum by affinity-chromatography using epitope-specific phosphopeptide. The antibody against non-phosphopeptide was removed by chromatography using non-phosphopeptide corresponding to the phosphorylation site.
Specificity/Sensitivity: Progesterone Receptor (phospho-Ser190) antibody detects endogenous levels of Progesterone Receptor only when phosphorylated at serine 190.
Reactivity: Human
Applications: WB: 1:1000
Swiss-Prot No. : P06401
References: Narayanan R, et al. (2005) Mol Cell Biol; 25(8): 2885-98.
Knotts TA, et al. (2001) J Biol Chem; 276(11): 8475-83.
Clemm DL, et al. (2000) Mol Endocrinol; 14(1): 52-65.
Zhang Y, et al. (1997) Mol Endocrinol; 11(6): 823-32



Western blot analysis of extract from COS7 cells treated with EGF using Progesterone Receptor (phospho-Ser190) antibody (pAP11074).

For Research Use Only

Contact & Ordering Information: Angio-Proteomie, 11 Park Drive, Suite 12, Boston, MA 02215, USA. Fax: (480) 247-4337, angioproteomie@gmail.com