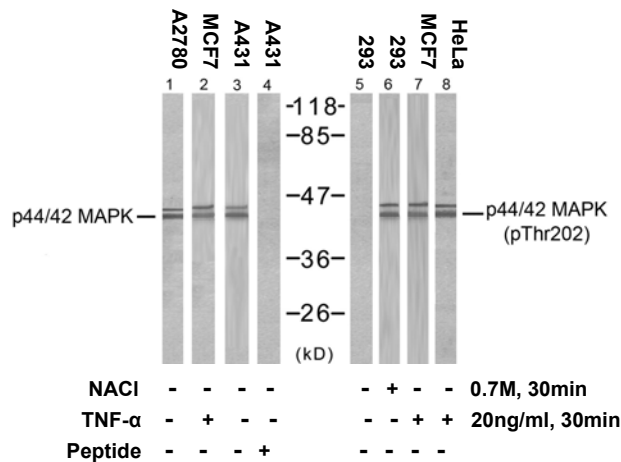


Rabbit anti p44/42 MAP Kinase (pThr202)

- Catalog Number:** pAP11245
Amount: 100µl (for 10 Western Blotting)
Swiss-Prot No. : P27361
Form of Antibody: Rabbit IgG in phosphate buffered saline (without Mg²⁺ and Ca²⁺), pH 7.4, 150mM NaCl, 0.02% sodium azide and 50% glycerol.
Storage/Stability: Store at -20°C/1 year
Immunogen: The antiserum was produced against synthesized phosphopeptide derived from human p44/42 MAP Kinase around the phosphorylation site of threonine 202 (F-L-T^P-E-Y).
Purification: The antibody was affinity-purified from rabbit antiserum by affinity-chromatography using epitope-specific phosphopeptide. The antibody against non-phosphopeptide was removed by chromatography using non-phosphopeptide corresponding to the phosphorylation site.
Specificity/Sensitivity: p44/42 MAP Kinase (phospho-Thr202) antibody detects endogenous levels of p44/42 MAP Kinase only when phosphorylated at threonine 202
Reactivity: Human, Mouse, Rat
Applications: WB: 1:1000
References: TETE HANNKEN, et al. (2000) Am Soc Nephrol 11:1387-1397
 Omar D. PerezNature et al. (2002) Biotechnology 20: 155 - 162
 Jingui Yu, et al. (2005) Anesth Analg 101: 315-321
 Hironobu Ihn et al.(2000) Immunology 165: 2149-2155



Western blot analysis of extracts from MCF7, 293, A431, A2780 and HeLa cells, using p44/42 MAP Kinase (Ab-202) antibody (AP21237, Line 1 2 3 4) and p44/42 MAP Kinase (phospho-Thr202) antibody (pAP11245, Line 5 6 7 8).

For Research Use Only

Contact & Ordering Information: Angio-Proteomie, 11 Park Drive, Suite 12, Boston, MA 02215, USA. Fax: (480) 247-4337, angioproteomie@gmail.com