

Rabbit anti p70 S6 Kinase (pSer411)

Catalog Number: pAP11269

Amount: 100µl (for 10 Western Blotting)

Swiss-Prot No. : P23443

Form of Antibody: Rabbit IgG in phosphate buffered saline (without Mg²⁺ and Ca²⁺), pH 7.4, 150mM NaCl, 0.02% sodium azide and 50% glycerol.

Storage/Stability: Store at -20°C/1 year

Immunogen: The antiserum was produced against synthesized phosphopeptide derived from human p70 S6 Kinase around the phosphorylation site of serine 411 (I-R-S^P-P-R).

Purification: The antibody was affinity-purified from rabbit antiserum by affinity-chromatography using epitope-specific phosphopeptide. The antibody against non-phosphopeptide was removed by chromatography using non-phosphopeptide corresponding to the phosphorylation site.

Specificity/Sensitivity: p70 S6 Kinase (phospho-Ser411) antibody detects endogenous levels of p70 S6 Kinase only when phosphorylated at serine 411.

Reactivity: Human, Mouse, Rat

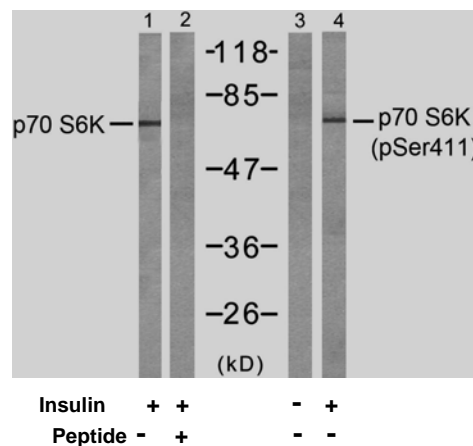
Applications: WB: 1:1000

References: Satoru Eguchi et al. (1999) J Biol Chem, Vol. 274: 36843-36851

Papst PJ, et al. (1998) J Biol Chem. 273(24):15077-84.

Ulrike Krause et al. (2002) Eur. J. Biochem. 269: 3751-3759 c

Le, X.F, et al. (2003) Oncogene 22: 484-97



Western blot analysis of extracts from 293 cells, untreated or treated with insulin (10µ/ml, 15min), using p70 S6 Kinase (Ab-411) antibody (AP21261, Lane 1 and 2) and p70 S6 Kinase (phospho-Ser411) antibody (pAP11269, Lane 3 and 4).

For Research Use Only

Contact & Ordering Information: Angio-Proteomie, 11 Park Drive, Suite 12, Boston, MA 02215, USA. Fax: (480) 247-4337, angioproteomie@gmail.com