

## Rabbit anti p70 S6 Kinase (pSer424)

**Catalog Number:** pAP11284

**Amount:** 100µl (for 10 Western Blotting)

**Swiss-Prot No. :** P23443

**Form of Antibody:** Rabbit IgG in phosphate buffered saline (without Mg<sup>2+</sup> and Ca<sup>2+</sup>), pH 7.4, 150mM NaCl, 0.02% sodium azide and 50% glycerol.

**Storage/Stability:** Store at -20°C/1 year

**Immunogen:** The antiserum was produced against synthesized phosphopeptide derived from human p70 S6 Kinase around the phosphorylation site of serine 424 (P-V-S<sup>P</sup>-P-V).

**Purification:** The antibody was affinity-purified from rabbit antiserum by affinity-chromatography using epitope-specific phosphopeptide. The antibody against non-phosphopeptide was removed by chromatography using non-phosphopeptide corresponding to the phosphorylation site.

**Specificity/Sensitivity:** p70 S6 Kinase (phospho-Ser424) antibody detects endogenous levels of p70 S6 Kinase only when phosphorylated at serine 424.

**Reactivity:** Human, Mouse, Rat

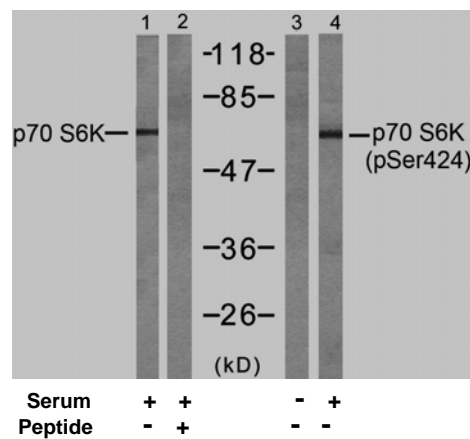
**Applications:** WB: 1:1000

**References:** Satoru Eguchi et al. (1999) J Biol Chem, Vol. 274: 36843-36851

Papst PJ, et al. (1998) J Biol Chem. 273(24):15077-84.

Ulrike Krause et al. (2002) Eur. J. Biochem. 269: 3751-3759 c

Le, X.F, et al. (2003) Oncogene 22: 484-97



Western blot analysis of extracts from 293 cells, untreated or treated with serum (10min), using p70 S6 Kinase (Ab-424) antibody (AP21276, Line 1 and 2) and p70 S6 Kinase (phospho-Ser424) antibody (pAP11284, Line 3 and 4).

**For Research Use Only**

Contact & Ordering Information: Angio-Proteomie, 11 Park Drive, Suite 12, Boston, MA 02215, USA. Fax: (480) 247-4337, [angioproteomie@gmail.com](mailto:angioproteomie@gmail.com)