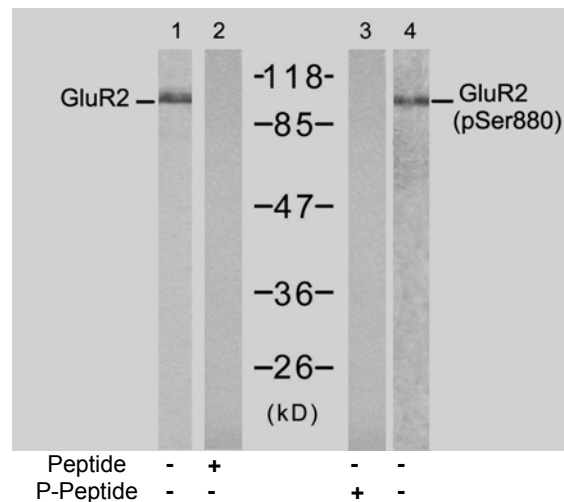


Rabbit anti Glutamate receptor 2 (pSer880)

- Catalog Number:** pAP11292
Amount: 100µl (for 10 Western Blotting)
Swiss-Prot No. : P42262
Form of Antibody: Rabbit IgG in phosphate buffered saline (without Mg²⁺ and Ca²⁺), pH 7.4, 150mM NaCl, 0.02% sodium azide and 50% glycerol.
Storage/Stability: Store at -20°C/1 year
Immunogen: The antiserum was produced against synthesized phosphopeptide derived from human Glutamate receptor 2 (Precursor) around the phosphorylation site of serine 880 (I-E-S^P-V-K).
Purification: The antibody was affinity-purified from rabbit antiserum by affinity-chromatography using epitope-specific phosphopeptide. The antibody against non-phosphopeptide was removed by chromatography using non-phosphopeptide corresponding to the phosphorylation site.
Specificity/Sensitivity: Glutamate receptor 2 (Precursor)(phospho-Ser880) antibody detects endogenous levels of Glutamate receptor 2 (Precursor) only when phosphorylated at serine 880
Reactivity: Human, Mouse, Rat
Applications: WB: 1:1000
References: Cull-Candy, S. et al. (2006) Curr. Opin. Neurobiol. 16, 288-297.
 Hanley JG, et al. (2002) Neuron. 34(1): 53-67



Western blot analysis of extract from mouse brain tissue, using Glutamate receptor 2 (Precursor)(Ab-880) antibody (AP21284, Lane 1 and 2) and Glutamate receptor 2 (Precursor)(phospho-Ser880) antibody (pAP11292, Lane 3 and 4).

For Research Use Only

Contact & Ordering Information: Angio-Proteomie, 11 Park Drive, Suite 12, Boston, MA 02215, USA. Fax: (480) 247-4337, angioproteomie@gmail.com